



Greener Glenview Bulletin

JULY / AUGUST 2022

Information, ideas, and events about environmental sustainability

SUMMER GREETINGS TO YOU!

As you can see, this is our July/August bulletin. Our next edition will be published in early September.

RECYCLING MADE EASY: BASIC TO ADVANCED

Do you wonder if recycling is really worth the effort or makes a difference for the environment? Are you confused about which materials can be put in your recycling bins? You're not alone. Over 50 people came to find out the answers to these questions at Greener Glenview's Recycling: Myth and Reality program, co-sponsored by the Village of Glenview and the Glenview Park District.

Experts with years of experience in the waste and recycling industry gave an eye-opening presentation. Speakers included Christina Seibert, Executive Director of the Solid Waste Agency of Northern Cook County (SWANCC), Mary Allen, SWANCC's Director of Education and Recycling, and Javier Erazo, the manager of the nearest Groot recycling facility (called a Materials Recovery Facility, MRF for short), as well as speakers from the Village of Glenview and the Glenview Park District.

CONTENTS

[Recycling Made Easy](#)

[Biking and Walking Survey](#)

[Solar](#)

[Allstate Development](#)

[Video of the Month](#)

[Helping Pollinators](#)

[Events](#)



RECYCLING (CONTINUED)

Not able to attend the program? It was recorded by GVTV. We expect that once editing is completed it will be available on Glenview's YouTube channel, and we will have a link on our website.

[Check out all the resources shared by the presenters on our website.](#)

Based on all the information presented, here are practical tips on how to make recycling easier in your household. By following these tips and SWANCC's guidelines, you will supply the MRF with the recyclables that are in demand by manufacturers.

First, understand that there are many ways to recycle. ALL levels of recycling, done right, are helpful in saving costs and preserving natural resources. Which level of recycling fits your household, based on your time available, and your commitment?

BASIC RECYCLING

Just the Curbside Bin.

Curbside is the simplest and most convenient way to recycle. It's also the easiest because only a limited number of items can actually be recycled and marketed through the Material Recovery Facility (MRF). SWANCC has an illustrated chart of the ONLY items that should go into curbside recycling bins. No need to look for those tiny little recycle numbers--just match items to the pictures here.

[Download the SWANCC Curbside Recycling Guidelines from our website.](#)

NOTHING ELSE GOES IN THE BIN. And please, NO PLASTIC BAGS. Plastic bagged items go straight to the landfill.

Note: Weekly curbside recycling is provided by Groot to all single-family homes and eligible multi-family townhomes that have "opted-in".

Business recycling is separate, not part of the Village contract for waste removal.

RECYCLING (CONTINUED)

INTERMEDIATE RECYCLING

Curbside Bin + Refuse/Reuse/Recycle Plastics (including film-like bags, newspaper sleeves)

We learned that of the 20 kinds of plastic in the marketplace, only 4 are recyclable in the curbside bin. (We all are tempted to “wish-cycle.” Putting plastics NOT SHOWN on the chart just contaminates the load and raises costs as those plastics are often landfilled. Wish-cycling doesn’t make the items recyclable.) So, what to do? Reduce and/or reuse these plastics. Here are some examples:

- Plastic take-out food containers and clamshells are not recyclable: Take your own container to restaurants for your leftovers, maybe the one you got from the restaurant on your earlier visit!
- Plastic containers of lettuce and other greens are not recyclable: Buy produce that’s unpackaged.
- Plastic straws and cutlery are not recyclable: refuse them, and bring your own.
- Coffee cups and plastic cups for takeout beverages are not recyclable: Take your own reusable cup or bottle for coffee or water.

Recycling plastic film takes a little more commitment.

Check the SWANCC site under FAQ’s: How can I recycle plastic film for a complete list of what can be recycled, and where to return it.

You’ll find out that grocery store plastic bags can go back to collection bins at stores such as Jewel, Heinen’s, and Target. Many other kinds of plastic film can also be included, such as bread bags, Ziploc bags, plastic cereal box liners, bubble wrap, plastic wrap around toilet paper, and paper towel packages. This material gets recycled into plastic lumber. For extra credit, complete the loop by buying plastic lumber patio furniture next time you’re in the market.

Note: The first step in recycling plastic is to refuse it in the first place. Take your own bags when you shop.

RECYCLING (CONTINUED)

ADVANCED RECYCLING

Curbside Bin + Refuse/Reuse/Recycle Plastic Film + Set a Goal of Zero-Waste.

One recycling habit leads to another, and pretty soon, your goal becomes minimizing waste across your household.

Download the SWANNC Closing the Loop: Where To Recycle handout on our website. The handout provides information on where to drop off these and many more kinds of materials that do not go in the curbside bin:

- Electronics (by state law, not allowed in landfills)
- Batteries (cause fires at MRFs—DO NOT put in the recycling bin)
- Household Hazardous Waste (like paints and household chemicals)
- Sharps and medicines
- Light bulbs containing mercury
- Composting (check under the Recycling tab)

ALL levels of recycling, done right, are helpful in saving costs and preserving natural resources.

THANK YOU for making it a habit in your household to reduce, reuse, and recycle right.



YOUR INPUT IS NEEDED!!!

BIKING AND WALKING: THEY'RE A WIN-WIN-WIN

Errands are a win-win-win when you go by bike or on foot. You get some exercise, get to know Glenview neighborhoods better, and you travel carbon-free.

What are the obstacles that keep you from biking or walking around Glenview? The Village wants to hear your ideas for improving the biking and walking infrastructure.

The Village is updating its 2007 Bicycle and Pedestrian Plan and the ADA Transition Plan. Take the quick two-part survey.

- The first part is a short Q&A.
- The second part is a separate interactive map that lets you designate specific locations you think could be improved for biking or walking.

Be part of improving biking and walking infrastructure in your town.

Take the survey before the end of July.



ILLINOIS SOLAR ENERGY ASSOCIATION SOLAR TOUR

WHEN: Saturday, September 24

WHERE: TBD

Greener Glenview and Go Green Northbrook are teaming up to host local sites in the annual Illinois Solar Energy Association Solar Tour on Saturday, September 24th. Mark your calendar to hear about your neighbors' solar experiences and cost savings.



If you have installed rooftop solar and would like to host a site on the tour, let us know at greenerglenview@gmail.com.

SOLAR POWER HOUR

WHEN: Thursday, August 25 7:00 PM to 8:00 PM

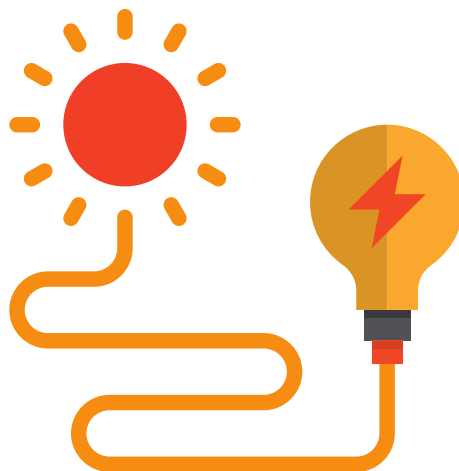
WHERE: Northbrook Public Library

If you're interested in learning about going solar and want to get your questions ready for the tour, plan to attend the Solar Power Hour program. Learn from the Citizens Utility Board and Grow Solar Chicagoland speakers how solar energy can reduce your energy bills, support the local economy, and help create a healthier environment.

You'll also learn how a group buy program can make solar more affordable.

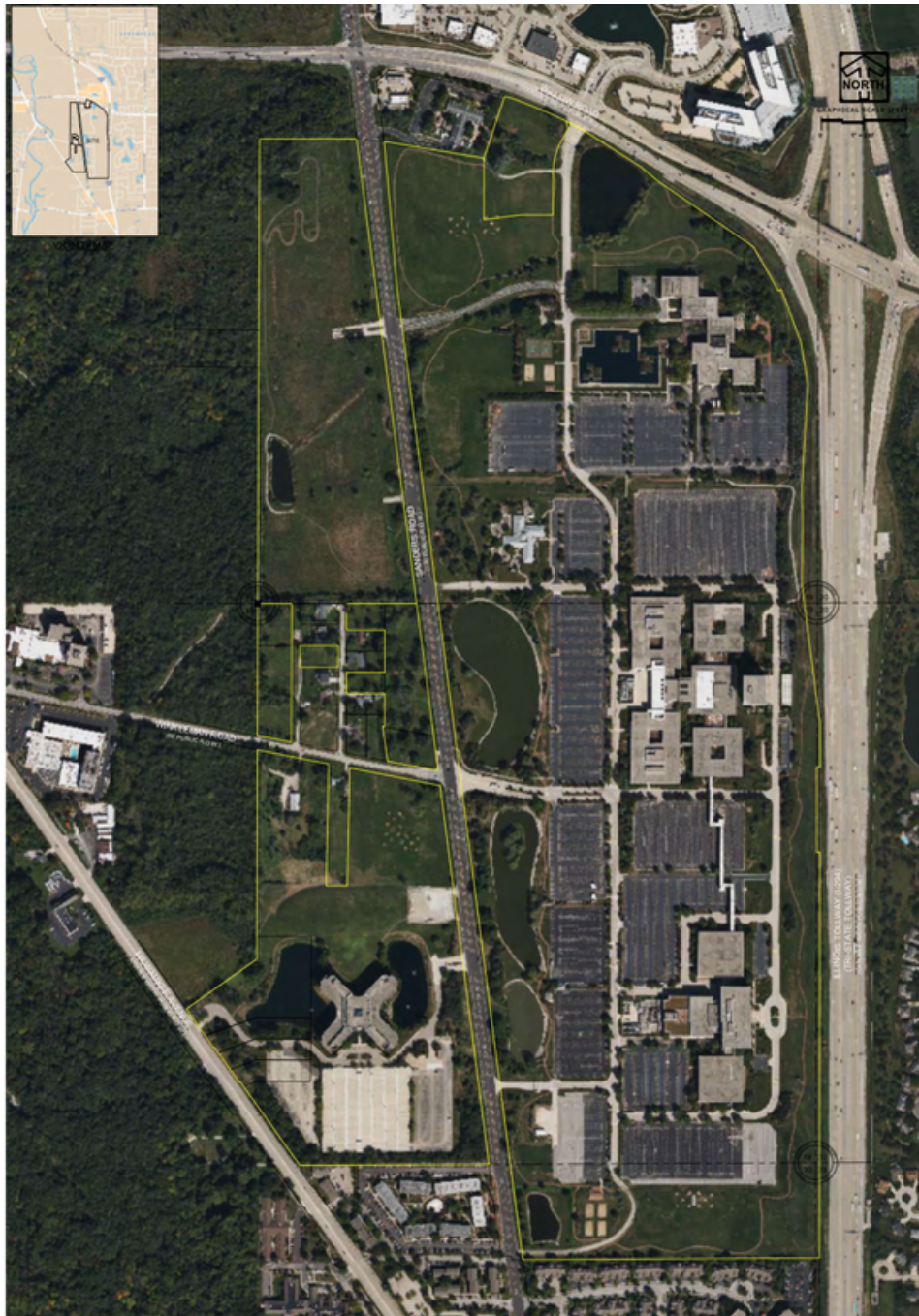
[Register to attend virtually.](#)

[Register to attend in person.](#)



MONITORING REDEVELOPMENT OF THE ALLSTATE PROPERTY

On Wednesday, June 29, Glenview's New Development Commission reviewed the proposal for the redevelopment of the Allstate campus. The properties lie on both the east and west sides of Sanders Road. New property owner, Dermody Properties, plans to construct a 10-building logistics center in three phases on its 230 acres. Here is an aerial view of the property:



MONITORING REDEVELOPMENT OF THE ALLSTATE PROPERTY (CONTINUED)

The Commission recommended approval of the proposal, with amendments, to the Glenview Village Board of Trustees. At its July 5 meeting, the Village Board will consider annexing the property.

Several environmental and sustainability concerns have been identified by residents and the adjacent Gertrude Nielsen Child Care and Learning Center. These include loss of open space, air pollution, noise pollution, and traffic. Greenhouse gas emissions, exacerbation of the heat island effect on the immediate area, and impact on the adjacent Cook County Forest Preserve (for the property on the west side of Sanders Rd.) are additional concerns.

By the time you read this, the Village Board meeting will have taken action on annexation. Greener Glenview will continue to follow developments, and speak publicly when necessary, on these environmental and sustainability issues. We are only one voice. Therefore, we encourage everyone to pay attention and make your voice heard on these issues.

Finally, the environmental/sustainability issues at Allstate will have bearing on the Village's plans regarding their desired I-294 off-ramp and on-ramps at The Grove. Many of the issues are the same.

The agenda for the upcoming meeting and all previous Board of Trustees meetings can be found [here](#).



CLIMATE CHANGE EXHIBIT: VOLUNTEER DOCENTS NEEDED

Climate Change Exhibit: Glencoe Power Tower

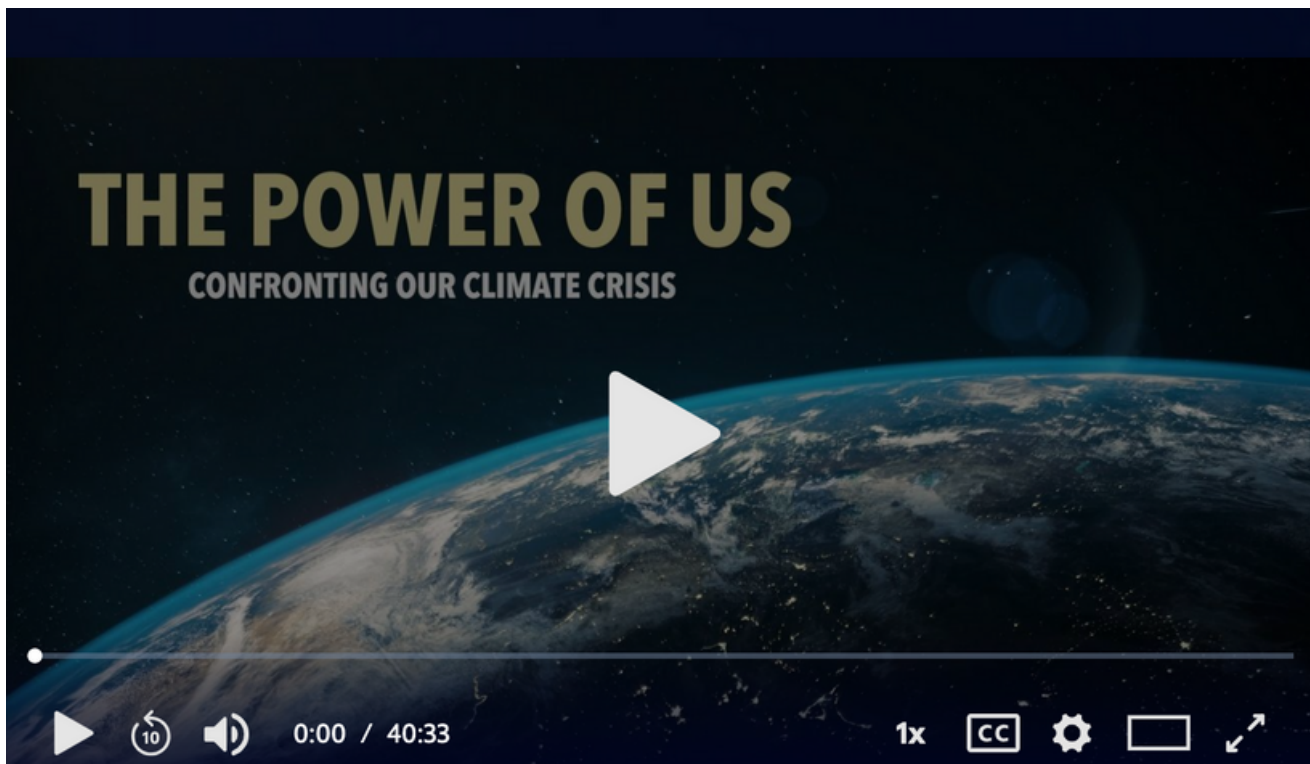
A new climate change exhibit which plans to open in early July is located on the south end of the Glencoe Community Garden at 380 Old Green Bay Road in Glencoe. The exhibit (which is run solely on renewable energy) is geared to children and pre-teens.

The exhibit is looking for volunteer docents. Anyone interested please contact Ann at anniegood41@gmail.com or Lorri at lorri.fishman@gmail.com.

A website, Power-Tower.org, is in the development stage and is expected to be available after the middle of July.

VIDEO OF THE MONTH

The Power Tower exhibit and its creators are featured in a short and inspirational WTTW documentary. Please watch it [here](#)!



THREE STEPS YOU CAN TAKE NOW TO HELP POLLINATORS

First, shrink your lawn by carving out a corner for flowering plants. Why remove some turf? Glenview's [Plan for Nature](#) clearly states that turf lawns have little ecological value.

[Read more here.](#)

Second, plant perennial coneflowers or other native plants in the carved-out space. One local source for native plants this summer is [Shady Grove Wildflower Farm](#) in Evanston. They also accept [donations of unrecyclable plastic pots](#), preferably smaller than gallon size.

Third, mow less often and stop using leaf blowers this summer while leaves are on the trees. Leaf blowers kill insects with their hurricane-force winds, and blow away soil and protective plant litter. Think of the emissions you'll save, too.

[Read more about leaf blowers here.](#)

Then, enjoy watching birds and butterflies return to your yard.



UPCOMING EVENTS

The EcoVoice Festival

Date: July 8–10

Location: Glenview Public Library Community Room West

The EcoVoice Festival is three days of performances and activities that build awareness, educate, and call others to act on climate change. The 2022 inaugural festival will be hosted at Loyola University and the University of Illinois, Chicago.

[For more information and to buy tickets](#)

Give Trees A Chance!

Date: July 13 @ 5:30 to 7:30 PM

Location: Pine St. cul-de-sac, 1331 Pine St. (the site is at the cul-de-sac at the very end of Pine St. The site is along the West Fork Chicago River)

Join [Openlands TreeKeepers](#)™ to learn how to care for new trees in your landscape or on the Village parkway near your home.

- How should a new tree be planted and mulched?
- How much water does it need?

TreeKeepers are local area residents provided with an intensive training course to learn best practices in caring for trees – and they are partnering with the Village to share what they know!

This event is open to anyone who would like to learn more about trees, and especially about how to help a new tree thrive.

UPCOMING EVENTS (CONTINUED)

Go Green Wilmette Sustainable Yard Tour

Date: July 17 @ 9:00 AM to 1:00 PM

This year the tour features six yards that all showcase the beauty and importance of native plants. From unusual species being grown to supply seeds to nearby prairie restorations to an attractive mingling of natives with traditional landscape plants, natives take center stage this year. Two gardens include innovative ways to grow food. There are water features, a rain garden, and composting methods on display as well.

[For more information](#)

Glenview Gardners Annual Garden Walk

Date: July 17 @ 1:00 PM to 4:00 PM

FREE and open to the public. Several members share their gardens with the public. Come be inspired! Plants and garden art will also be sold.

[For more information](#)

North Branch Restoration Project Workday at Blue Star Memorial Woods

Date: July 24 @ 9:00 AM to Noon

[For more information and to register](#)

UPCOMING EVENTS (CONTINUED)

The Wondrous World of Fireflies

Date: July 26 @ 7:00 PM

Location: Virtual

For centuries fireflies have sparked wonder. Join Go Green Wilmette to learn how they got their bright lights, their remarkable lifestyles, hear how human activities put fireflies at risk, and what you can do to protect these charismatic insects.



[For more information and to register](#)

Energy Revolution Exhibit

Date: Through October 22

Location: Chicago Architecture Center, 111 East Wacker, Chicago

Energy Revolution demonstrates how we can actively respond to the climate crisis by transforming our use of energy in the built environment. The exhibition highlights the ways individuals, corporations, and city leaders can work toward a carbon-free future.

“We are the first generation to feel the sting of climate change, and we are the last generation that can do something about it.” –Jay Inslee, Governor of Washington

General admission to all exhibits, \$14. Free for Chicago Architectural Center members

[For more information](#)