



Greener Glenview Bulletin

2024

Welcome to 2024!

Greener Glenview resolves to make 2024 a hopeful year through working together in Glenview. We'll be focusing on four Action Groups and host a Sustainability Fair planned with the Glenview Park District on Sunday, April 21, 2024. Keep reading to learn more! Glenview Native Habitat will continue its push to make Glenview a Community Wildlife Habitat, and we'll become involved in other issues as they arise. We look forward to all our members taking action with us as 2024 will be a busy year!

Please donate to support our efforts!

We are always happy to receive your emails of appreciation and encouragement of our collective mission. Many thanks to those who have donated their time, money, and have made in-kind contributions to our collective mission.

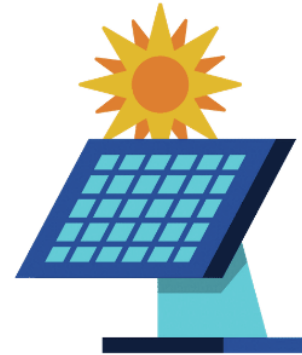
There's a lot planned in 2024 and it costs money to run Greener Glenview. We'd be very grateful for a donation from our subscribers to help all our efforts. [You can DONATE here](#). Thank you in advance for your financial support.

Greener Glenview is an Illinois not-for-profit organization that is registered with the IL attorney general as a charitable organization. We are NOT an IRS 501(c)(3) entity. That means that any donation you make is NOT TAX DEDUCTIBLE.

Four Action Groups in 2024

These groups were created based on Greener Glenview members' interests that have emerged over the past two years. Consistent with our mission to preserve and enhance both the natural and the built environment, two of these action groups focus on the built environment and two focus on the natural environment. We intend to educate residents and seek municipal code changes to guide continuing environmental preservation in Glenview.

**Action Group 1. Built Environment:
CLEAN ENERGY/ENERGY
CONSERVATION**



Visitors to the last two years' Glenbrook Solar Tours all wanted to know if solar energy really works and if the investment to electrify really pays off. This Action Group will address the whole Glenview community, residential and business and municipal, on the practical aspects of electrification: the benefits, hurdles and payback. The goals are:

- Educate attendees on the range of clean energy technology, appliances and energy conservation actions they can take to reduce their energy consumption and greenhouse gas generation.
- Provide real-world lessons from homeowners who have adopted newer technologies/appliances.

[CONTACT US](#) to let us know you are interested in this Action Group.

Save The Date: April 21 Sustainability Fair

On Sunday, April 21, 2024, Greener Glenview will host a Sustainability Fair at the Park Center Gym in collaboration with the Glenview Park District. The fair's focus will be energy conservation and electrifying our homes and businesses with clean energy technologies.

Get in touch if you have purchased or installed any of the following. We'd like to learn about your experiences.

- Heat pumps (HVAC)
- Heat pump water heaters

- Induction stoves
- Battery-operated backup generators
- Light fixtures and bulbs (International Dark-Sky Association compliant)
- Electric lawn care equipment
- Rooftop/ground mounted solar
- Community solar
- Triple-pane windows
- EVs and charging stations
- Electric fireplaces.

[CONTACT US](#) and [we'll follow up.](#)

Action Group 2. Built Environment: TURN OFF THE LIGHTS!

Seen any stars lately? The inability to see a night sky full of constellations is the most obvious example of the consequences of light pollution. We may think we have grown accustomed to ever-increasing levels of artificial light at night. But adaptation to this condition on the part of the natural world, including humans, tells a different story.



Life on Earth evolved with light during the day and darkness at night. Artificial light at night (ALAN) adversely affects the natural cycles occurring in humans, insects, birds & other animals, and plants. Our focus will be impacts on the non-human world as ALAN interferes with the ability of animals to hunt, mate, nest, navigate and communicate.

[LEARN MORE](#) and [WATCH THE VIDEOS](#) from the ALAN presentation hosted by Greener Glenview.

Look for a meeting later in February to work on goals and actions for the group to reduce ALAN in Glenview. A few of the suggested actions generated at the November 8 Greener Glenview meeting were:

- Educate residents and businesses through a presentation from the International Dark-Sky Association

- Encourage the use of motion sensors and timers (NOT light sensors) on outside lights
- Have a volunteer "house lighting walk" that demonstrates the kind of fixtures and bulb 'color temperatures' that are recommended.

[CONTACT US](#) to let us know you are interested in this Action Group.

Action Group 3. Natural Environment: BUCK THE BUCKTHORN!

According to the 2020 Chicago Region Trees Initiative Census Report, invasive buckthorn is the most common tree species at 33% of the canopy population and has increased in the last 10 years. Buckthorn harms the environment, as this invasive plant outcompetes native plants, reduces biodiversity, degrades the quality of wildlife habitats, and reduces water quality. Buckthorn continues to invade new areas and expand where it already exists.



The Morton Arboretum notes that successful of buckthorn eradication programs are possible, as evidenced by their 2020 effort; 62 plots have reduced buckthorn and 33 plots that no longer have buckthorn. This is an example of what can be accomplished.

The Buck the Buckthorn group will work to educate residents, business owners, and village employees on the identification of buckthorn, negative impacts, and removal process and maintenance requirements. Outreach to the community is crucial and will include informational campaigns, learning with experts, and hands on work experience. We will work with the Village and Park District to see the removal of buckthorn on public lands with the possibility of focusing on a specific park or area.

See below to learn more about identifying and removal of buckthorn:
[Glenview Identifying Buckthorn Video](#)
[Morton Arboretum](#)
[Buckthorn in Cook County Forest Preserves](#)

[CONTACT US](#) to let us know you are interested in this Action Group.

Action Group 4. Natural Environment: GLENVIEW NATIVE HABITAT NEIGHBORHOOD AMBASSADOR PROGRAM



The Glenview Native Habitat (GNH) project will begin a new effort to increase our number of National Wildlife Federation-certified gardens in Glenview. This will take us towards our ultimate goal of making Glenview a Community Wildlife Habitat.

In 2024 we will recruit and train 'Neighborhood Ambassadors'. The Neighborhood Ambassadors are Glenview native gardeners who volunteer to talk with their neighbors to provide information about native species gardens and support to certify their gardens with the NWF. Our GNH initiative will provide training opportunities and materials for the Neighborhood Ambassadors to use as they speak with their friends and neighbors.

[CONTACT US](#) to let us know you are interested in this Action Group.

GG Interview with Erin Newman

As we work towards "decarbonizing" our environment, education is the first step and we'll start there, in an interview with Erin Newman, a Glenview resident and an environmental scientist at USEPA-Region 5 in Chicago, which has jurisdiction over six Great Lakes states. An EPA employee for the past 23 years, she has worn many hats. Her current title is Climate Change Mitigation Coordinator within the Air and Radiation Division. In the past she worked extensively with the Metropolitan Mayors' Caucus, developer of northeast Illinois' Greenest Region Compact ("GRC", adopted by Glenview in 2020) and the 2022 Climate Action Plan. Erin helped establish the Greenest Region Corps to assist municipalities in implementation of the GRC.

GG: Tell us about the sources of greenhouse gas emissions (GHG) and USEPA's role in reducing their generation.

EN: About one-third of emissions come from industry and are regulated

at the national and state level. Another third comes from the transportation sector which is regulated nationally and at the state & regional level, and one-third of emissions come from buildings which are regulated locally through building and zoning codes.

GG: From USEPA's perspective, what is the highest priority now?

EN: Working with state and local governments to deeply decarbonize our economy. The Inflation Reduction Act has \$4.6 billion in grants and tax credits available related to clean energy and energy conservation programs. The deadline for applying for these funds is April 1, so we are very busy getting out the word on fund availability and processing applications.

GG: What are the most significant actions homeowners, renters and businesses can take to reduce their energy costs and GHG emissions?

EN: The first priority should be on energy conservation. Improving your home's energy efficiency reduces costs and GHG emissions. This can be accomplished by taking advantage of the FREE ComEd & Nicor energy assessments to indicate where energy is being wasted and how to fix it. A second important action is to consider one of ComEd's alternative pricing programs. For example, with the real-time pricing program, you can offset your energy use (e.g. EV charging) to a different time of day when rates are lower because demand is lower. High energy demand on the grid costs more and creates more GHG emissions as fossil fuel-fired peaker units come online. A third important action is to select electric appliances rather than gas. [USEPA's Energy Star website](#) provides extensive energy efficiency and rebate information on a wide variety of household and consumer products, as well as energy efficiency benchmarking of commercial buildings, and information on new home construction.

Taking it a step further, generating your electricity through clean energy sources such as rooftop or community solar or wind power makes your actions even greener. In doing so you've decreased your reliance on electricity generated by fossil fuel-fired power plants.

GG: What are some of the partnerships USEPA has established with municipalities?

EN: The SolSmart and EV Readiness programs are two of the better known programs that offer technical assistance to municipalities. A local government can become a solar energy leader by receiving SolSmart designation through the U.S. Department of Energy. The Metropolitan

Mayors' Caucus is the USEPA grantee administering the EV Readiness program and other initiatives through the Grantee Climate Mitigation & Greenhouse Gas Reduction Grant. [GG NOTE: The focus of the [EV Readiness program](#) is on decarbonizing transportation by accelerating investment in EV charging infrastructure and transitioning fleets to low and zero-emission vehicles.]

GG: What strategies should municipalities take that would have the greatest impact on reducing local GHG emissions?

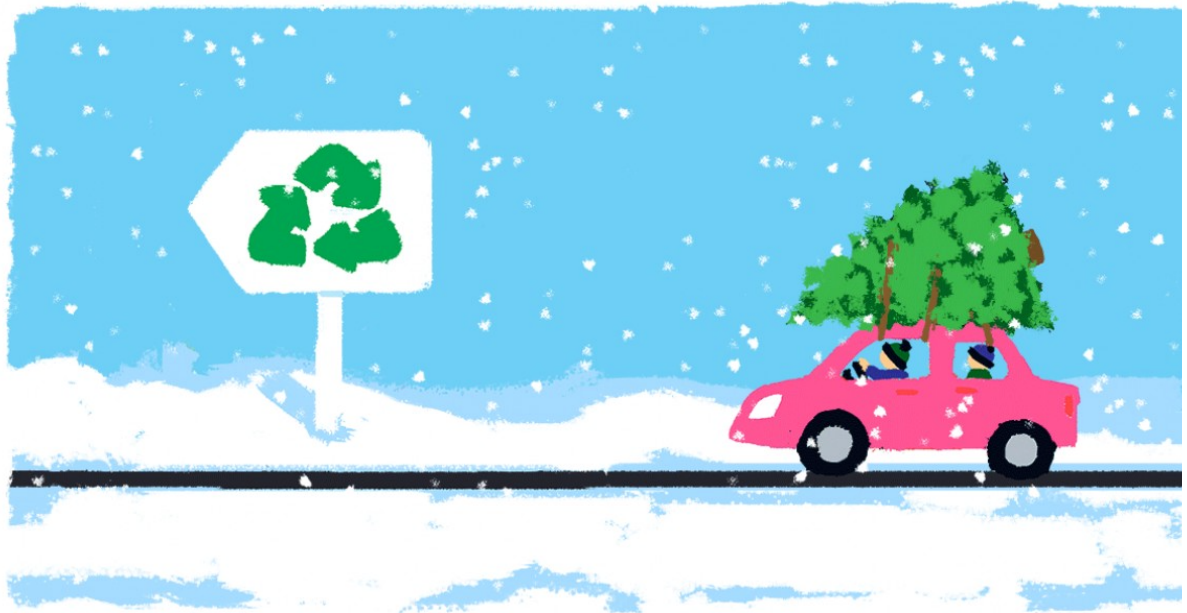
EN: Greenhouse gas mitigation is a really wide topic. Waste reduction efforts and making a community more bikeable & walkable have an impact. Since the IRA grant period is currently open and applicants are in competition, I can't talk about what strategies have been the most effective in Region 5 or in Illinois. USEPA offers opportunities and options; we are agnostic about the choices made by municipalities. It's a local decision based on local needs. In the Chicago metro region, the Metropolitan Mayors' Caucus Greenest Region Compact and the 2022 Climate Action Plan lay out many strategies.

GG: What are some USEPA online resources can you recommend?

EN: Beside EnergyStar, we have the [Household Carbon Footprint Calculator](#) that will show you how much carbon dioxide your home is emitting.

GG: A closing thought?

EN: In order to meet our climate goals, we need everyone to work together: the federal, state and local governments and consumers. Local governments play a key role in addressing the climate crisis.



Give Your Tree a Green Goodbye (From the Glenview Park District)

You don't have to throw your real Christmas tree in the trash. The tree is biodegradable, which means it can be easily reused or recycled for mulch. Trees can be dropped off until January 31 at these designated collection points:

- Glenview Public Works, 2498 East Lake Avenue
- Johns Park. 2101 Central Road—west side of parking lot near tennis courts
- Flick Park, 3600 Glenview Road—middle parking lot just left of sled hill
- Cunliff Park. 540 & Echo Lane—northeast corner of parking lot
- Cole Park, 1031 Kenilworth Avenue—northwest corner of parking lot
- Willow Park. 2600 Greenwood Avenue—just south of tennis courts
- Gallery Park, 2001 Patriot Boulevard—middle parking lot north side of park

Alternatively, residents in single family homes, duplexes and multifamily properties that have opted into the Village's refuse and recycling program can put trees, wreaths and garlands out with the regular garbage during the month of January. Groot will collect them at

no additional charge. All ornaments, lights and tinsel should be removed from trees. Do NOT cover the tree with a plastic disposal bag. Multifamily dwellings that are not part of the Village's waste contract should refer to their management companies for the appropriate method of disposal.

Holiday lights

And remember, holiday lights can also be recycled. Drop them off in the marked receptacle outside the Public Works Department through February 28.

[For more information](#)



Glenview Native Habitat Neighborhood Ambassador Program

WHEN: Saturday, January 6 • 10:00-11:30 AM

WHERE: Glenview Public Library, Multipurpose Room

Learn about the next phase of the Glenview Native Habitat initiative to increase pollinator habitats in Glenview and help get the Village of Glenview certified as a native habitat by the National Wildlife Federation.

It All Starts From A Seed

WHEN: Tuesday, January 9 • 7:00 PM

WHERE: Glenview Public Library
SPONSOR: Glenview Gardeners

Are you looking to diversify your landscape with native plants? Winter is the time to plan, prepare and propagate native plants and it all starts with a seed. Join Judy Grimes, founder of Prairie Plant Revival, as she shares her experience and tips for harvesting and storing seeds and propagating native plants. You will learn the unique requirements for growing natives from seed and simple steps for winter sowing and seed starting.

Sustainable vs Fast Fashion

WHEN: Monday, January 22 • 7:00-8:00 PM
WHERE: Zoom
SPONSOR: Northbrook Public Library

[For more information](#)

North Branch Restoration Workdays

All workdays are 9:00 a.m.-12:00 p.m.

[To register for any of these workdays](#)

Watersmeet Prairie Grove

WHEN: Saturday, January 6 and January 20
WHERE: This site is located in the village of Northfield near the Glenview border. On Winnetka Road, east of Wagner Rd. Park on Avon Ave, a side street to the north of Winnetka Road. Meet near the Forest Preserve sign, across the road from Avon.

Harms Woods

WHEN: Saturday, January 13
WHERE: Meet at the forest preserve Glenview Woods parking lot on the west side of Harms Road, just south of Glenview Road.

Harms Woods East

WHEN: Sunday, January 21
WHERE: Harms Woods South parking lot (Groves 1 & 2) on the west side of Harms Road. In the event that lot is flooded, please meet at the Harms Woods Central parking lot (Groves 3 & 4) on the west side of

Harms Road.

Glenview Park District Restoration Workdays

For families and individuals Ages 8+. Volunteers under 15 must participate with an adult. Volunteers under 18 must have a waiver signed by a parent or guardian. To receive an application/ waiver in advance please contact grove.volunteers@glenviewparks.org. Work days may be cancelled due to inclement weather.

The Grove

WHEN: Sunday, January 14, 9:00-11:00 AM

WHERE: Meet at the Interpretive Center

Collect seeds or remove non-native, invasive plants to make way for native wildflowers, grasses and trees. No advance registration necessary—just bring your work gloves if you have them. Email groverestoration@glenviewparks.org for more information including availability. Work parties may be cancelled due to inclement weather.

Winter Restoration Work Day at Air Station Prairie

WHEN: Saturday, January 20, 10:00 AM-Noon

WHERE: Kent Fuller Air Station Prairie

Assist in the restoration efforts at Kent Fuller Air Station Prairie by helping with a variety of restoration activities such as removing non-native invasive plants or collecting seed. Bring work gloves if you have them.

Copyright © 2024 | Greener Glenview | All rights reserved.