



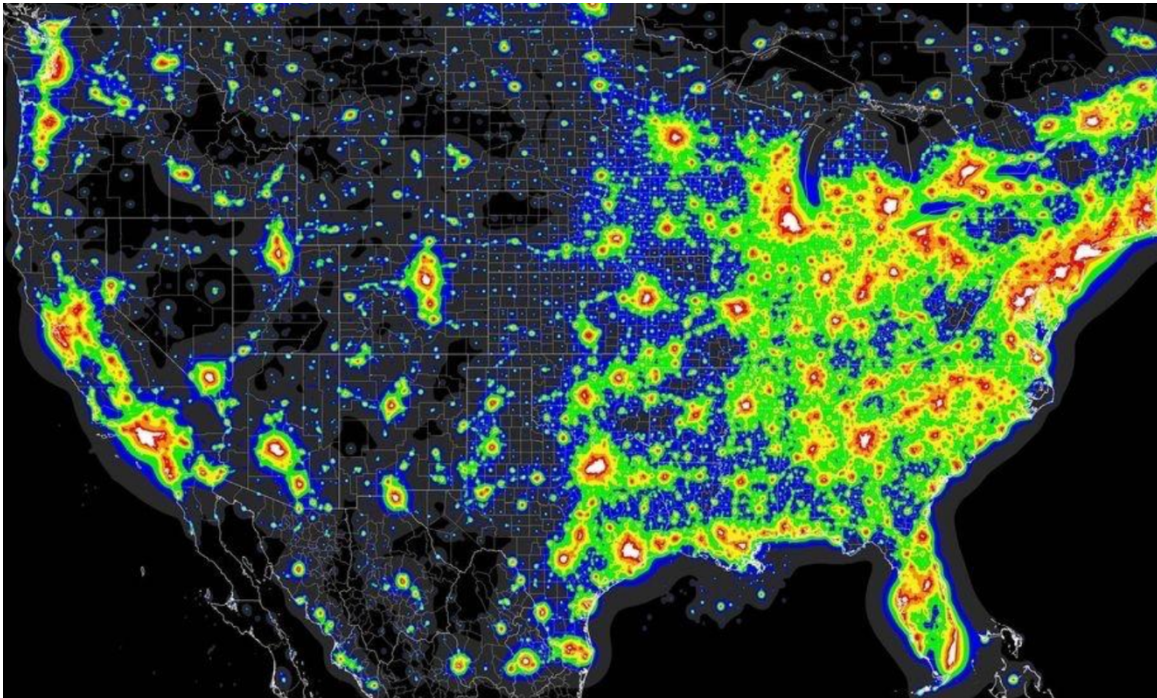
# Greener Glenview Bulletin

---

**June 2023**

---

**Artificial Light at Night Presentation Now  
Available on Video!**



Greener Glenview's April 10 presentation by Robert Sullivan "Artificial Lighting at Night (ALAN) and Its Effects on the Environment and Human Health" is now available on the Greener Glenview website and our YouTube Channel. The presentation has been edited into five sections.

[Section 1: Introduction and Overview \(18:00\)](#)

[Section 2: ALAN and Melatonin \(7:27\)](#)

[Section 3: How Does Light Pollution Affect Animals and Plants? \(21:19\)](#)

[Section 4: What YOU Can Do About ALAN \(8:50\)](#)

[Section 5: Questions and Answers \(25:00\)](#)

We invite you to view each of the video segments as Dr. Sullivan's presentation was engaging, powerful, and important. Please share these videos with others who may be interested.

---

## **Bugged by Mosquitoes? Prevention is Better Than Spraying**

We all love a pleasant backyard, but we do not love the mosquitoes that go with it. Many companies offer services to control mosquitoes on private property, but there are good reasons to exercise caution when using them



Spraying is not as effective as **preventing** mosquitoes from hatching in the first place. Empty standing water and/or apply larvicide tablets to birdbaths and other standing water. The NSMAD has free supplies of larvicide tablets.

Spraying can **harm** humans, pets, and beneficial pollinators when the spray drifts or lingers on flowers.

Culex mosquitoes that carry West Nile virus are becoming **resistant** to the main pyrethroid pesticide used in barrier treatments and truck-mounted ULV applications.

[Read about resistance here](#)

Please share this information with your family and friends, as well as the following offer from the North Shore Mosquito Abatement District (NSMAD)

## **AN IMPORTANT MESSAGE FROM THE NORTH SHORE MOSQUITO ABATEMENT DISTRICT**

Welcome to the 2023 mosquito season.

Please [contact us](#) for a FREE property inspection before using a yard spray or contracting with a private pest control provider for barrier sprays.

NSMAD will

- identify if there are mosquitoes present (there are several harmless lookalikes)
- look for breeding sources and potential breeding sources
- eliminate or treat any breeding sources with mosquito specific bio-rational control products to prevent further adult mosquito emergence
- make recommendations that will help you minimize future mosquito issues

[Learn more here](#)

Be sure to dump and/or drain items that can hold water and lead to mosquito breeding around your property.

The NSMAD Tire Collection Program is back. [Click here](#) for details on how we can help you properly dispose of unwanted

Here is the [NSMAD Weekly Report for Week 21](#), our first for the year

Please contact us if you have any questions: Website: <http://www.nsmad.org/>

Phone: 847-446-9434

Email: [nsmad@nsmad.com](mailto:nsmad@nsmad.com)

---

## Greener Glenview Partners with the Glenview Park District: Nature -- There's An App for That!

*Free Classes at The Grove!*

Have you ever been outside and wondered "What is that?" It could be a bird, tree, plant, insect, or other animal you need help identifying. Well, there's an app for that!

Join The Grove and Greener Glenview as we collaborate with other experts and share our knowledge of some amazing community science apps that help you with nature identification and turn you into citizen scientists.

The sessions are free, but please reserve your spot by calling The Grove at 847-299-6096. For more information contact Diane at [diane.michalski@glenviewparks.org](mailto:diane.michalski@glenviewparks.org), 224-521-2101.

**WHAT:** Nature -- There's an App for That! Merlin and EBird

**WHEN:** Sunday, June 11 @ 1:00 to 3:00 PM

**WHERE:** The Grove

Join Josh Engel of Red Hill Birding in The Grove's Program Barn for instruction on using Merlin and EBird, two popular birding apps developed by Cornell University's Lab of Ornithology. Following the tutorial, attendees will practice using the apps on a trail hike. In case of rain, practice will occur indoors. Smartphones are required. A trail hike is included.

Register by calling The Grove at 847-299-6096.

Additional classes:

I-Trees            Sunday, July 23, 1-3 pm

I-Naturalist      Saturday, August 12, 1-3 pm

NIOSH-Sound Level Meter   Sunday, September 10, 1-3 pm  
(measuring noise pollution)





**SportSwap: Save the Date -- Sunday, August 27 @ 12 to 3 PM**

If you have gently-used sports equipment lying around that you're no longer using, please hang onto it for another couple of months!

Greener Glenview will be holding an all-sports, all-seasons SportSwap in the Park Center West Gym to benefit the Glenview Park Foundation. This event is designed to keep used equipment from being landfilled by giving residents a way to acquire necessary equipment at a low cost.

The Park District is preparing a flyer that provides details, including the three drop-off dates. Watch for details in the July and August Greener Glenview Bulletins and through the Park District weekly email.



## Glenview Native Habitat Continues to Bloom

Thank you to the nine home gardeners who certified their pollinator gardens in May!

Glen Oak Acres has redone the entryway plantings at Sunset Ridge and Pleasant, adding native *asclepias tuberosa* to the plantings. Not familiar with *asclepias tuberosa*? It's also known as butterfly weed. Other plantings include some so-called nativars, such as *echinacea purpurea* "magnus." These look like purple coneflowers, but they've been genetically modified for the big reddish-purple blossom. They're beautiful, but they lack the genetic diversity that straight natives possess. The importance of this genetic diversity is that it allows plants to adapt to changing conditions over time, while nativars do not have the diversity to adapt. Still, it's a very pretty entryway that combines native butterfly weed with other nativars and non-native plants such as daylilies and Russian sage. Keep an eye on this area, and watch for the big orange blossoms and the butterflies who will visit!

### **Trees host pollinators, too**

Usually, when we think of native plants, we think of native flowers and shrubs to add to the garden, but trees support butterflies and moths, too. Take a look at this [list of trees](#) that Douglas Tallamy compiled showing how many butterfly and moth species they support.

Tree care basics: During this dry weather, be sure to water and mulch your trees. For expert and easy advice about watering and the right way to mulch your trees, check out this door hanger [Cathy--see images] from the Chicago Region Tree Initiative, and this [video about mulching](#) from the Village of Glenview.

To learn more from a certified Openlands Tree Keeper, plan to join the **Park Manor Tree Walk** that will be led by Glenview's Natural Resources Manager Robyn Flakne on **June 15<sup>th</sup>, from 4:30 to 6:30.**

### **GNH needs volunteers**

Want to help the Glenview Native Habitat project? [We need volunteers](#) for our many activities this spring and summer. [Volunteer here.](#)

### **GNH wants your photos**

Do you have a picture of your pollinator garden that you'd like to share? [Send](#)

us your pictures and a list of some of the natives you've planted, and we'll post the information in the Bulletin and in our social media. Send us your pictures of wildlife and native gardens around Glenview. Please include the date, location, and any details we should know.

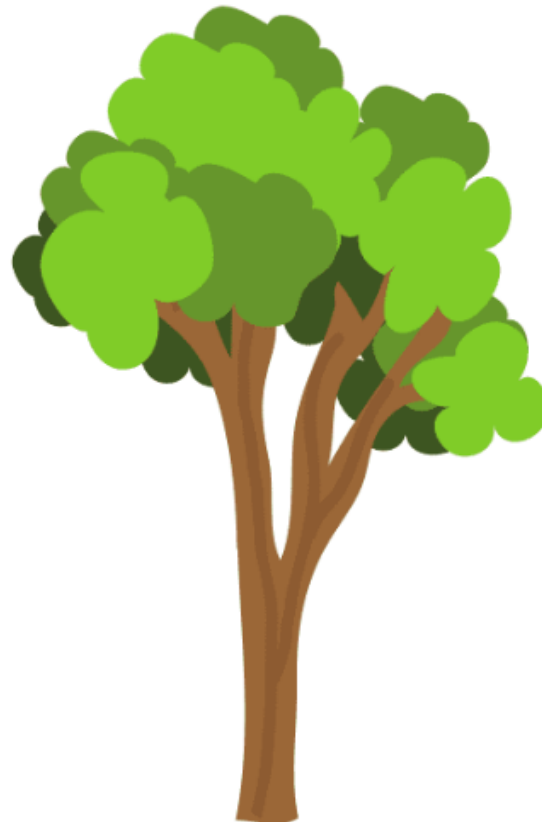
---

## Tree Tips

Make sure the mulch around your tree looks like a donut, not a volcano.

Make sure you can see your tree trunk's root flare.

Water! A newly planted tree needs more water than you think, daily at first. Mature trees should be watered during dry period, too. Check the soil a few inches down to see if it is dry. Pour three to four five-gallon buckets of water slowly near the base of the tree or use a slow trickle from the hose for 15 to 20 minutes.



---

## Local Regulation of Coal Tar Sealant (CTS)

This month's topic is coal tar sealants, a kind of topcoat for asphalt surfaces. Asphalt surfaces such as driveways, playgrounds, basketball courts, and private roads are often sealed with a top coat to extend their life or preserve their appearance.

In 2018, Glenview banned the use of sealants containing coal tar due to the

presence of toxic and carcinogenic compounds. For this reason, topcoats containing coal tar sealants are no longer sold to the public in hardware or big box stores. However, asphalt contractors are able to acquire coal tar sealants from industrial sources and, without the property owner's knowledge or permission, apply them to their driveway or other surface. This ordinance is intended to prohibit that application from occurring.

Alternative asphalt sealants are widely available. The responsibility is on the property owner to ensure that the product being applied does not include coal tar sealants. Prior to the enactment of the CTS ban, the village reported that its contracted projects prohibited the use of CTS. The park district also reported the same information on its projects.

#### **WHAT THE MUNICIPAL CODE SAYS:**

##### CHAPTER 18: BUILDING AND BUILDING REGULATIONS

##### ARTICLE XII. - CONSTRUCTION REQUIREMENTS FOR DEMOLITION AND CONSTRUCTION WORK IN THE VILLAGE

#### **Sec. 18-746. - Coal tar sealants prohibited.**

(a) Definitions.

*Coal tar* is a byproduct of the process used to refine *coal*. *Coal tar* contains high levels of polycyclic aromatic hydrocarbons (PAHs).

Polycyclic aromatic hydrocarbons (PAHs) are a group of organic chemicals that are present in *coal tar* and are an environmental concern to human health and watershed life.

Pavement sealing means the application of *sealant* or sealcoat product to maintain any surface, including but not limited to, a driveway, driveway approach, on- or off-street parking area, playground, sidewalk, bike trail, patio, sports facility, loading area or facility, street, highway, or roadway.

(b) Prohibition on pavement sealing using *coal tar* products. On public and private property, no *coal tar* products of any kind, including *coal tar* derivatives, *coal tar* mixtures, or any other product containing equivalent levels of PAHs, shall be applied or used for pavement sealing within the Village. **Any person engaging in pavement sealing must have a Material Safety Data Sheet available on the premises for the product being used for pavement sealing.**

(c) Prohibition on the sale of *coal tar* products. No person may sell, offer to sell, or display for sale any product used for pavement sealing within the Village that



is labeled as containing *coal tar* products."

(Ord. No. 6157, § 3, 5-1-2018) **Editor's note**— Ord. No. 6157, § 2, adopted May 1, 2018, renumbered § 18-746 as § 18-747; and § 3 enacted a new § 18-746 to read as set out herein.

**Sec. 18-747. - Violations; penalties.**

(a) Any person who violates disobeys, omits, neglects or refuses to comply with or resists the enforcement of any of the provisions of this article shall be fined not less than \$500.00, nor more than \$1,000.00. Each day such violation or failure to comply is permitted to exist after notification thereof shall constitute a separate offense.

(b) No certificate of occupancy shall be issued for any construction undertaken in conjunction with the provisions of this article until such time that all penalties and fines have been resolved to the satisfaction of the director of development or his/her designee.

(Code 1959, § 30.16; Ord. No. 6157, § 2, 5-1-2018) **Editor's note**— Ord. No. 6157, § 2, adopted May 1, 2018, renumbered § 18-746 as § 18-747. See editors note at § 18-746 for more information.

**ENFORCEMENT: The responsibility is on the property owner to ensure that the product being applied does not include coal tar sealants. The homeowner is supposed to inspect the contractor's Material Safety Data Sheet (MSDS) to ensure it does not contain CTS.**

**HERE'S THE QUESTION:** Is it reasonable to expect residents to know how to read or interpret an MSDS? Who can advise residents about which CAS numbers are prohibited? What actions should the Village take to educate residents?

---

## **Plan for Nature Update: Guidelines or a Plan?**

Glenview's Plan for Nature 2023 update is nearing completion, and the **public will be invited to comment in July**. The draft includes two main parts—the extensive Technical Survey and the Executive Summary that lists past accomplishments and future priorities. The Environment and Natural Resources Commission is exploring how to make the draft available for review.

At the May ENRC meeting, commissioners discussed the differences between a

“Plan” and “Guidelines”. Implementation of the 2008 Plan for Nature relied on grants. Natural Resources Manager Robyn Flakne stated that having a well-designed Plan for Nature is a powerful supporting document for such grant requests.

Unfortunately, though several high-priority areas were identified in 2008, further study did not occur, including the high-priority area adjacent to the Valley Lo Club. The contentious commission hearings about Valley Lo’s proposed pickleball courts and new parking lot have illustrated the importance of addressing the natural environment and its role in Glenview’s quality of life.

Perhaps in 2008, it was sufficient to only rely on grants for funding. In 2023, other sources of funding must be considered, including the Permanent Fund. In 2009, village trustees expanded the use of the Permanent Fund for green infrastructure projects. The Corporate Fund is another potential funding source.

It remains to be seen whether the 2023 Plan for Nature will be Guidelines or a true Plan with funding for implementation. A plan without funding is just a wish. When the draft plan is open for public comment, we hope you will take the time to review it and submit comments to the village.

---

## EVENTS

### **Doug Tallamy on the Homegrown National Park Initiative**

**WHEN:** Wednesday, June 7 @ 7:00 to 8:00 PM

**WHERE:** Virtual

Doug Tallamy returns to the Glencoe Library to share details about his newest initiative, Homegrown National Park. The author of *Bringing Nature Home: How You Can Sustain Wildlife with Native Plants* and other acclaimed books on the environment, Tallamy is calling on public and private spaces to offset the rapidly rising impacts of climate change by supporting and expanding biodiversity.

[REGISTER](#)

### **Art Reception for Ask Me About Buckthorn Mural and Native**

## Plant Sale

**WHEN:** Saturday, June 10 @ 3:00 to 6:00 PM

**WHERE:** Evanston Art Center, 1717 Central St., Evanston

In honor of Illinois Invasive Species Awareness Month, the Art Center is displaying a new outdoor mural, Ask Me About Buckthorn, on the Side/Lot – the east side of the building – through June 23. There will be a free public reception to celebrate the Side/Lot mural and refreshments will be served and a pop-up native plant sale will be hosted by Evanston's Shady Grove Wildflower Farm.

## Harms Woods Nature Walk

**WHEN:** Saturday, June 10 @ 10:30 to 11:30 AM

**WHERE:** Glenview Woods Parking Lot

Sponsored by the Glenview Public Library, explore your neighborhood and go on a walk with Derek Ziomber of the Friends of the Forest Preserves.

[For more information and to register,](#)

## Nature -- There's An App for That: Training on Merlin and eBird

**WHEN:** Sunday, June 11 @ 1:00 to 3:00 PM

**WHERE:** The Grove

Join Josh Engel of Red Hill Birding in The Grove's Program Barn for instruction on using Merlin and eBird, two popular birding apps developed by Cornell University's Lab of Ornithology. Following the tutorial, attendees will practice using the apps on a trail hike. In case of rain, practice will occur indoors.

The sessions are free, but please reserve your spot by calling The Grove at 847-299-6096. For more information contact Diane at [diane.michalski@glenviewparks.org](mailto:diane.michalski@glenviewparks.org), 224-521-2101.

## The Grove Literary Society Book Club

**WHEN:** Begins Wednesday, June 14

**WHERE:** Redfield Estate, The Grove

*Bringing Nature Home*, by Douglas W. Tallamy. This famous text will introduce you to the art of native landscaping and describe how you can beautify your home while providing food and shelter to our rapidly disappearing wildlife. Tallamy provides a compelling argument for the use of native plants in gardens and landscapes. The book was first published in 2007, and an updated and expanded edition is currently in its seventh printing. Since there is not much time before the meeting, you will not be expected to have read the book by June 14, rather we will use the first meeting to design future meetings to get the most out of the text.

Register by calling The Grove at 847-299-6096.

### **Tree Walk in Park Manor**

**WHEN:** Thursday, June 15 @ 4:30 to 6:30 PM

**WHERE:** Meet at Elm Street entrance to Manor Park (between 143 and 203 Elm St.)

**SPONSORS:** Village of Glenview and Openlands TreeKeepers

Take a walk around the block starting at Manor Park, focusing on the parkway trees, tree identification, care and lore. Questions? Contact Robyn Flakne, rflakne@glenview.il.us

### **Evanston Garden Walk**

**WHEN:** Sunday, June 25 Noon to 5:00 PM

**WHERE:** On website

**SPONSOR:** Evanston Environmental Association

Rain or shine, walk through some of the most creative, beautiful, and personal gardens Evanston has to offer. Most gardens are accessible, although steep inclines and steps do occur in some. Maps are provided.

[For more information or to purchase tickets](#)

### **Techny Basin Bird Conservation Workdays**

**WHEN:** Saturday June 17 @ 7:30 to 9:30 AM and Sunday, June 18 @ 4:00 to 5:30 PM

**WHERE:** Sheraton Northbrook (by Pinstripes on Willow)

Techny Basin's breeding Meadowlarks, Savannah Sparrows, and Spotted Sandpipers need our help! This year, the basin will be mowed to control teasel in the last week of June. The Chicago Audubon Society partners with the Metropolitan Water Reclamation District to ensure that the mowing avoids nests on the ground. The birds will not nest in big patches of teasel but they will nest in grassland with scattered teasel plants. We cut the flowering stalks of this biennial weed to ensure that it will not flower and set seed, and so that the parts of the grassland where birds nest will not need to be mowed.

[For more information](#)

Please help save these birds' nests, eggs, and nestlings. Join a workday. There will be training to recognize teasel. Bring your work gloves and clippers or use ours. Snacks and water will be provided but please bring a reusable water bottle.

### **The Grove Restoration Workday**

**WHEN:** Sunday, June 25 9:00-11:00 AM

**WHERE:** 1421 Milwaukee Avenue, Glenview

Please [RSVP here](#) to reserve your spot. Work parties may be canceled due to inclement weather. Volunteers under age 15 must participate with an adult.

### **North Branch Restoration Workdays**

All workdays are 9:00 a.m.-12:00 p.m.

[To register for any of these workdays](#)

### **Kent Fuller Air Station Prairie**

**WHEN:** Saturday, June 10

**WHERE:** Compass and Lehigh Roads, Glenview. Meet at the Interpretive Center

**Watersmeet Prairie Grove**

**WHEN:** Saturday, June 10 and 24

**WHERE:** This site is located in the village of Northfield near the Glenview border. On Winnetka Road, east of Wagner Rd. Park on Avon Ave, a side street to the north of Winnetka Road. Meet near the Forest Preserve sign, across the road from Avon

**Blue Star Memorial Woods**

**WHEN:** Saturday, June 18

**WHERE:** Parking is on parking on Wilmette Ave just east of Harms Rd; walk over to the woods at the marked pedestrian crossing.

