



Solid Waste Agency of
Northern Cook County

Recycling: Myth and Reality

Greener Glenview

June 21, 2022

Christina Seibert
Executive Director

Mary S. Allen



Recycling & Education Director



 swancc.org

Mission

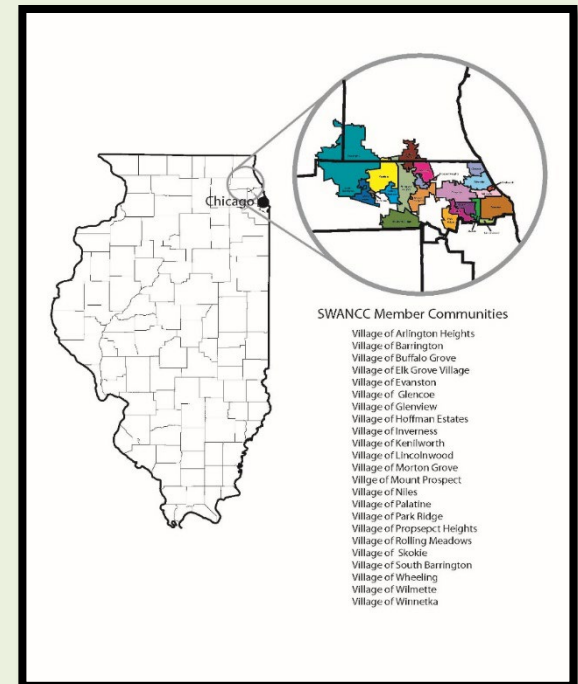
- **To provide long-term, cost-competitive, efficient, and environmentally-sound collection, consolidation, transportation, and disposal of municipal solid waste;**
- **To divert the volume and toxicity of solid waste through reuse, recovery, and special disposal measures and programs.**

Members

Arlington Heights
Barrington
Buffalo Grove
Elk Grove Village
Evanston
Glencoe
Glenview
Hoffman Estates
Inverness
Kenilworth

Lincolnwood
Morton Grove
Mt. Prospect
Niles
Palatine
Park Ridge
Prospect Heights
Rolling Meadows
Skokie
South Barrington

Wheeling
Wilmette
Winnetka



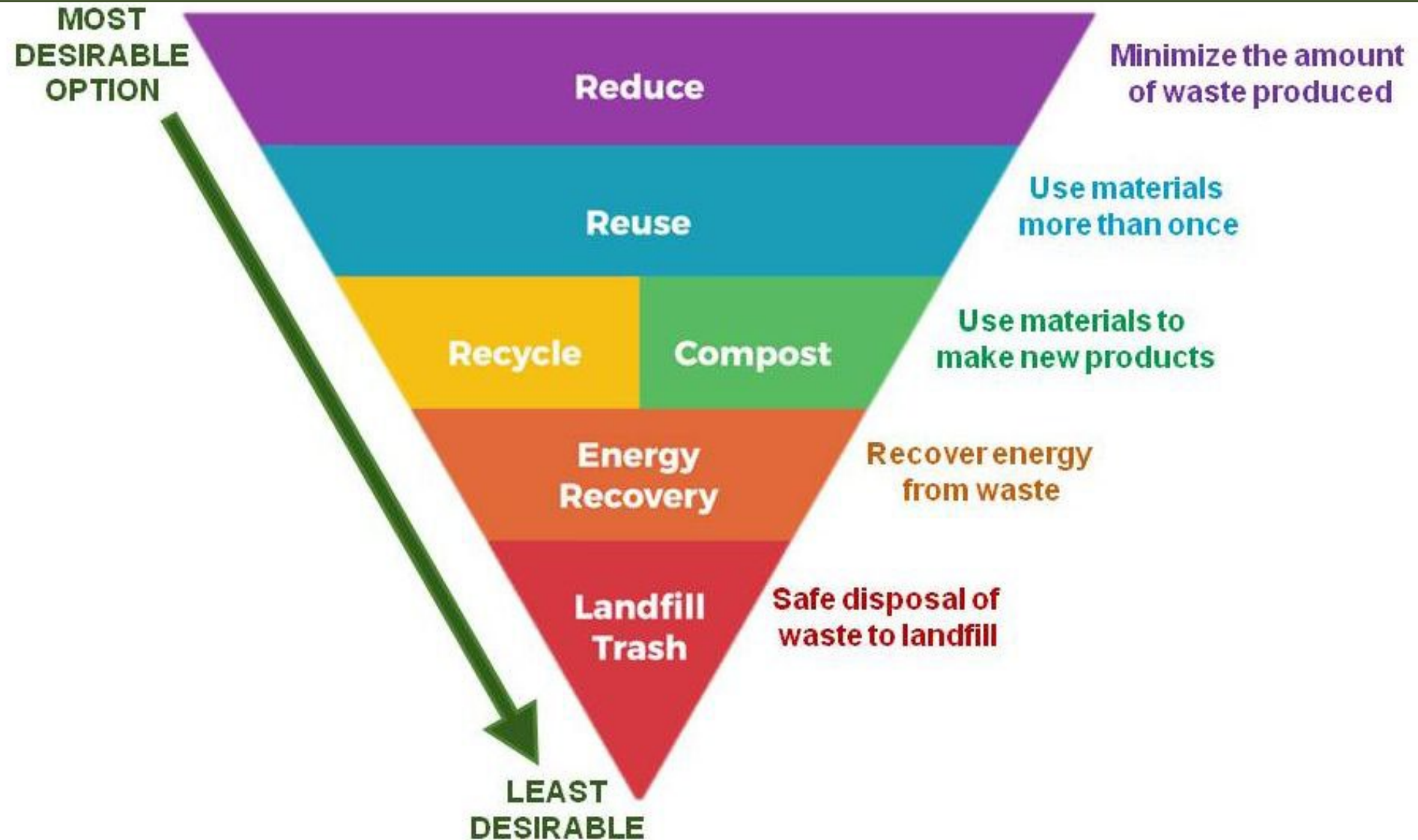
Current Waste Disposal Operations

- **Project Use Agreement obligates Members to deposit their residential solid waste with the Agency until 2031.**
- **SWANCC operates a transfer station to receive Member waste and transport waste to landfill for disposal.**
- **Staff assists member communities with solid waste contract negotiations.**

Glenview Transfer Station



Waste Hierarchy



Special Materials Programs for Residents



- Electronics – It's the Law 2012! (1999)
- Document Destruction (2005)
- Mercury Thermometers (2005)
- CFLs and Tube Lights (2007)
- Medications (2007)
- Sharps (2007)
- Holiday Lights (2008)
- Batteries (2009)



Policy and Planning

- **Agency-Level Planning**
 - Solid Waste Management Plan (2014)
 - Strategic Plan (2021)
- **State & National Organization Leadership & Participation**
 - Illinois Food Scrap Coalition – founding member in 2012 (USCC)
 - Illinois Counties Solid Waste Management Association
 - Illinois Chapter of Solid Waste Association of North America (SWANA)
 - Illinois Recycling Association / Illinois Recycling Foundation (NRC)
 - Illinois Product Stewardship Council (Product Stewardship Institute)

Legislation & Task Force Involvement

- **Task Force Involvement**
 - Advancement of Materials Recycling (2015 study)
 - Electronics Recycling (legislative implementation)
 - Materials Management Advisory Committee (2021 study)
- **Legislation**
 - Electronics recycling (since 2008; new law in 2017)
 - Pharmaceutical EPR (signed into law June 10, 2022)
 - Carpet and Paint EPR (ongoing, multi-year effort)
 - Packaging and paper products EPR (in development since 2021)

The Dilemma with Recycling



Why Recycling Right Matters

- Clean, quality materials are needed to make new products and using recycled materials to make new products reduces the need to extraction raw materials.
- Recycling markets are currently strong for select materials.
- Mixing non-acceptable materials with “good” recyclables causes contamination – often loads area landfilled.
- Bagged recycling results in being landfilled.
- Contamination costs money – unaccepted items are landfilled - cost is passed on to consumers.

Curbside Recycling is Limited



Curbside Recycling Guidelines

Put in Recycling Cart LOOSE! - Empty & Clean



Glass
Bottles & Jars



Plastic
Bottles - Caps On Preferred,
Tubs, Jugs, Jars
No Bags, Film, or Foam



Metal
Steel & Aluminum
Depressurize Aerosols



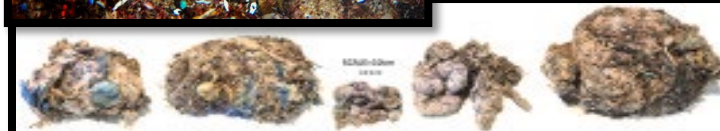
Mixed Paper & Cartons
Flatten Boxes

Scan for FAQs:



Plastics and Litter Impacts

Eco Systems and Human Health



The polybezoar, formed from tightly packed plastic bags and rope found in the gut, results in a 1% regional mortality rate in camels.



Wishcycling

Putting materials in the cart hoping they get recycled



Dangerous



Tangles



Health Hazards



Stinks

A central illustration of a grey trash can with a white lid, overflowing with various food items like a banana, a red hot dog, and a blue water bottle. The trash can is surrounded by a large amount of litter scattered on the ground, including a newspaper, a green juice can, a brown paper bag, a glass, a can, a banana peel, a chocolate bar wrapper, and several small blue and red caps. The scene is set against a plain white background.

**CONTAMINATION!
WAS THIS YOU?**

Cart Tagging Pilot Program

May 2022



- **Barrington - Fridays**
- **Evanston - Wednesdays**
- **Mount Prospect - Thursdays**

Cart Tags

Oops!
I Spy Contamination...

Don't put any of these items in recycling cart

Bagged Recycling 

 **Batteries/ Electronics**

Plastic Bags/ Film 

 **Foam**

Bulk 

Note:

Don't Bag Recycling!
Leave Materials Loose





Put recycling LOOSE into cart

Return plastic bags/film to retail stores

Thank You!
Lookin' Good

PAPER



METAL



PLASTIC



GLASS



Contamination to Point Out



CBS Chicago News

<https://www.cbsnews.com/chicago/news/get-an-oops-or-a-thank-you-tag-in-mount-prospect-environmental-road-warriors-hit-the-street-to-help-with-recycling-efforts/>

Education is Key!

Label Every Container



Circularity

CIRCULAR ECONOMY



Eliminate the concept of waste!

- Wm. McDonough Michael Braungart

- Don't just minimize – optimize materials and resources;
- Reduce, Reuse, Recycle AND Redesign, Renew and Regenerate materials into natural systems:
 - ▶ Biological Nutrients or
 - ▶ Technical Nutrients
- Think of the next use for materials – not the end of life;
- Being less bad is not good;
- Endless is more!

Groups Working for Solutions

- **The Closed Loop Foundation**
- **The World Economic Forum & Ellen McArthur Foundation**
- **The New Plastics Economy**
- **The Plastics Pact**
- **Foundation for Plastic Recycling**
- **Plastic Waste Transparency Project (BAN)**
- **The Recycling Partnership**
 - **Polypropylene Recycling Coalition**
 - **Film and Flexibles Coalition**
- **Terracycle**
- **Chemical Recycling (Brightmark in IN)**

Increase Education

Reduce Wasted Food and Compost

DO YOU KNOW YOUR PRODUCT LABELS?



SELL BY DATE IS THE DATE SHOPS HAVE TO SELL THE ITEM BY. IT'S NOT AN EXPIRATION DATE, SO USE YOUR SENSES TO DETERMINE IF PERISHABLES HAVE GONE BAD.

BEST BEFORE DATE IS THE DATE YOU SHOULD USE IT BEFORE. YOUR FOOD WILL BE BETTER BEFORE THIS DATE, BUT WON'T NECESSARILY HAVE GONE BAD. USE YOUR SENSES TO DETERMINE WHETHER YOU CAN EAT IT.

USE BY DATE IS THE DATE WHEN A PRODUCT IS NO LONGER SAFE TO CONSUME. IT'S AN EXPIRATION DATE FOR THE PRODUCT.

1MILLION



Food Waste Reduction Toolkit for Illinois Schools




BENEFITS OF COMPOSTING

RETAINS MORE WATER
Compost helps strengthen soil's ability to retain water. This causes plants to not need to be watered as frequently.

REDUCES SOIL EROSION
Erosion occurs when top soil is blown or washed away causing infertile topsoil. Compost can restore topsoil and build stable soil structure.

HELPS CARBON SEQUESTRATION
Carbon is stored in the top 3 feet of soil and is released into the atmosphere when soil structure is poor. Applied compost helps improve soil structure to combat against this.

REDUCES LANDFILL WASTE
Composting helps divert materials from going to the landfills, minimizing the amount of greenhouse gas emissions released into the atmosphere and lengthening the capacity of landfills.

REDUCES NEED FOR SYNTHETIC FERTILIZERS
Compost sufficiently supplies soil with nutrients like phosphorus and nitrogen. This reduces the need for additional fertilizer because compost naturally provides the necessary nutrients for the soil.

Seven Generations Ahead | **IFSC** | FoodLandOpportunity



COLLECTIVE RESOURCE™ COMPOST



SWANCC.ORG



[ABOUT](#) [RECYCLING](#) [OUTREACH](#) [RESOURCES](#) [TRANSFER STATION](#) [CALENDAR](#)

Reuse/Recycle Directory



Find outlets for items that can be reused, recycled, or need safe disposal.

Chemical/Paint Disposal



Household Chemical Waste (HCW) collections are conducted by the Illinois Environmental Protection Agency (IEPA) and are available to all Illinois residents.

Recycling FAQs



Find answers to questions about how to recycle or safely dispose of various items.

Transfer Station



The Glenview Transfer Station is available to commercial and landscape contractors and other commercial entities for the disposal of landscape waste, solid waste, and construction debris.



MARCH

Month Day

Sun	Mon	Tue	Wed	Thu	Fri	Sat
27	28	1	2	3	4	5

Thank You For Doing YOUR Part!

Christina@swancc.org

Mary@swancc.org

